

INVASIVE ALIEN SPECIES

Alien species are organisms (plants and animals, but also fungi, bacteria and viruses) introduced by humans outside their natural range, either intentionally or accidentally. Some of them successfully establish and thrive in the new environment, having **negative impacts** and becoming invasive. It is these invasive alien species (IAS) that pose serious threats to the survival of many native species and are among the main causes of **biodiversity loss**. They also can have serious social, economic and human health consequences.

LIFE ASAP

Life ASAP – Alien Species Awareness Program – is a national campaign on IAS with two aims: increasing public awareness of the threats posed by these species; promoting better prevention and effective management of IAS across all components of our society.

EUROPEAN REGULATION

The threat from IAS is so severe that the European Union has adopted the **Regulation (EU) no. 1143/2014**, which lists the actions needed to prevent their introduction and spread; a special emphasis is placed on the ban on possession and transportation, as well as on stricter border controls. Currently, the Regulation applies to 49 species, 33 of which are present in Italy.

Let's stop invasive alien species



Alien Species Awareness Program



*Go home only with
emotions and memories*

#lifeasap



www.lifeasap.eu

Financed by



Coordinating beneficiary



Associated beneficiaries



Co-financiers



DON'T LET THEM TRAVEL

Are you sure you're not carrying
invasive plants or animals in your luggage?



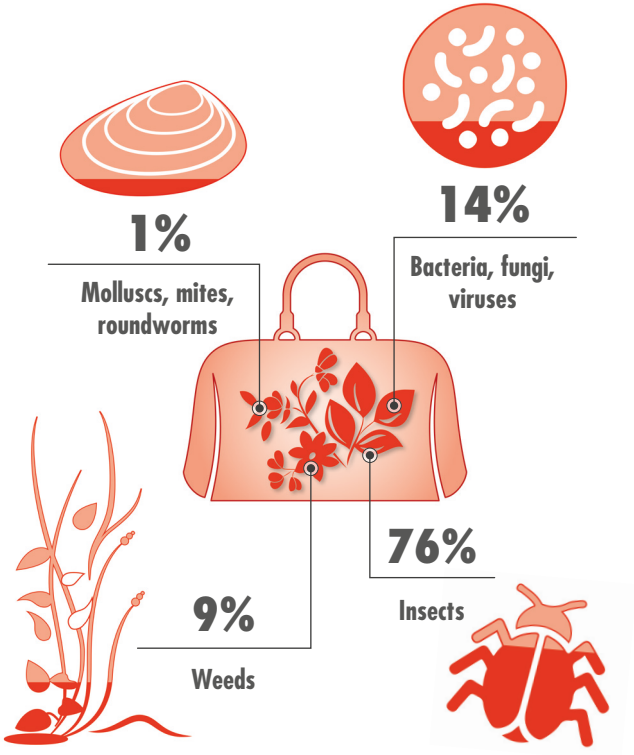
LIFE15 GIE/IT/001039

DON'T LET THEM TRAVEL

A significant increase in the number of introductions of IAS has been observed in the last few decades as a result of the growing movement of goods and people around the world due to globalization.

Travelling is now much easier than in the past, and international travellers and their luggage become one of the most important pathways of introduction of IAS.

While travelling, we are often unaware of the risks connected to the transportation of plants and animals.



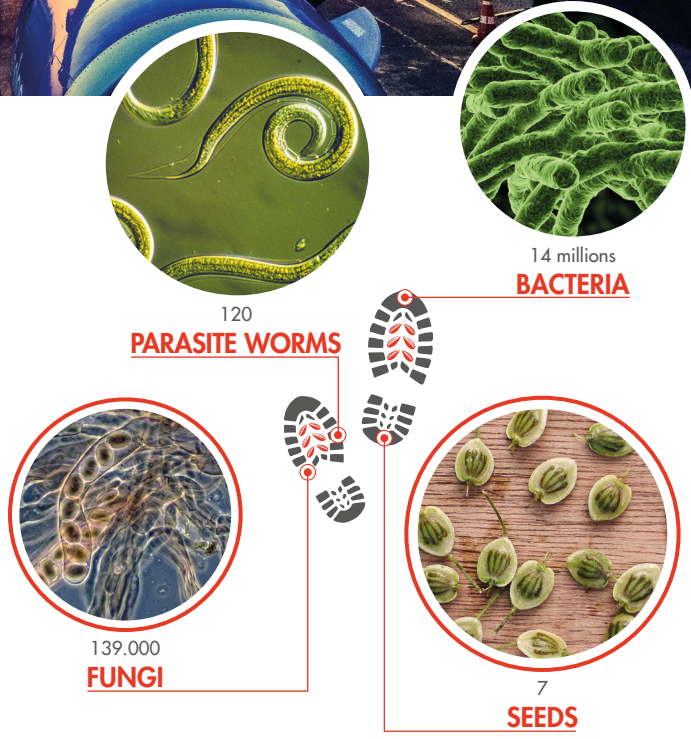
INVASIVE SPECIES FOUND ON PLANT PRODUCTS CARRIED IN PERSONAL LUGGAGE
(Data are in percentage, USA 1984 - 2000; more than 450.000 interceptions;
source: McCullough et al., Biological Invasions 2006)



Sometimes we intentionally bring with us alien plants or animals that could eventually escape and spread; other times we unintentionally carry living organisms from one place to another in our luggage, hidden on (or even within) natural products (e.g. plant bulbs, fruits, wooden crafts), clothes, shoes or sport gears.

Insects trapped in our camping tents or backpacks, seeds entangled in our boots or clothes, algae stuck on fishing equipment are just a few of the many examples of involuntary hitch-hikers.

When we travel, in order to minimize the chances of invasive alien species introduction we need to be aware about the risks they pose and our role as potential carriers.



SOLES ADHERING TO YOUR FOOTWEAR MAY HOLD ON AVERAGE ABOUT 3 GRAMS OF SOIL IN WHICH MANY TYPES OF ORGANISMS ARE TRAPPED
(source: McNeill et al., Biological Invasions 2011)